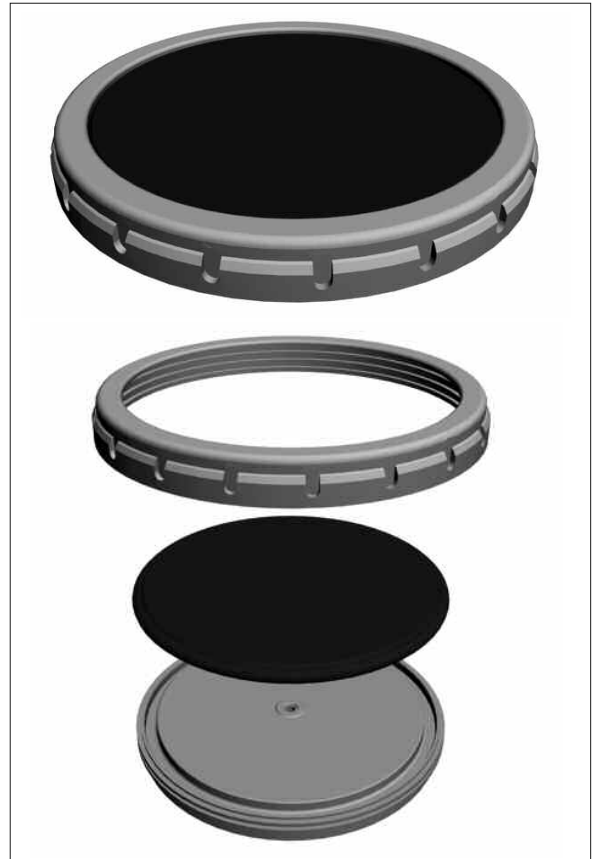


# SSI™ FINE BUBBLE DIFFUSERS

## AFD350 12" DISC

- Highest possible quality and technology means years of trouble-free efficient operation.
- Highest possible SOTE independently tested per ASCE, and lowest possible headloss.
- More economical but as efficient as a 9" (270mm) disc diffuser. AFD350 has an even lower headloss than AFD270, often resulting in the highest SAE (kgO<sub>2</sub>/kWh) when compared to other fine bubble diffusers.
- Experienced Engineering and Drafting staff with years of practice to assist you.
- Simple and quick installation with QC Saddle or Grommet
- 212° F (100° C) temperature resistance and environmentally-friendly polypropylene body.
- Compression-molded membranes with individual thermocouples in each cavity = 100% quality control.
- Each membrane checked for even perforation depth to ensure uniform air release.
- Low membrane plasticizer content to reduce shrinkage and hardening, but enough to avoid creep.
- Multiple integral check valves keep your aeration piping system clean.
- 21st century-special materials, such as PTFE, fEPDM, as well as reinforced and coated ultra fine bubble membranes for outstanding chemical or fouling resistance, or for the highest oxygen transfer efficiency at a headloss you can live with.
- In stock on 3 continents in 4 locations.

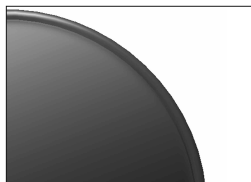


## MEMBRANES



### EPDM

- Excellent conventional material
- No encapsulation



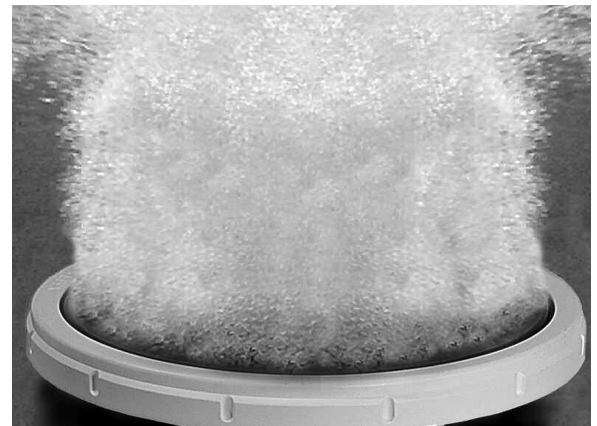
### fEPDM

- Superior chemical resistance
- Complete surface and slit encapsulation



### PTFE

- Best fouling resistance
- Non-stick coating
- Surface encapsulation



*Please see reverse for additional technical data*



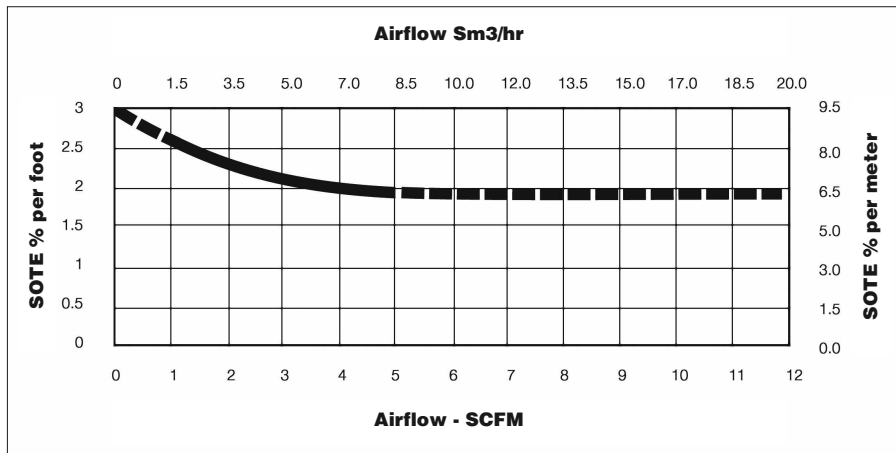
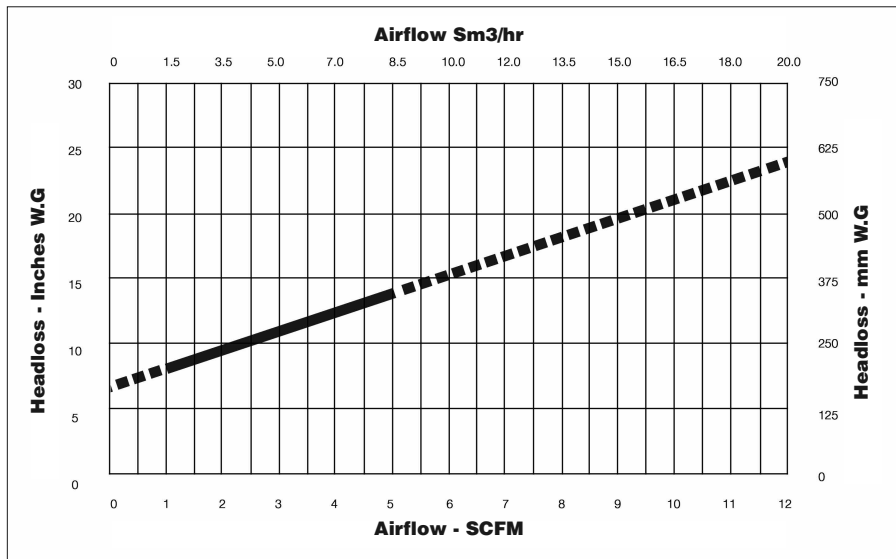
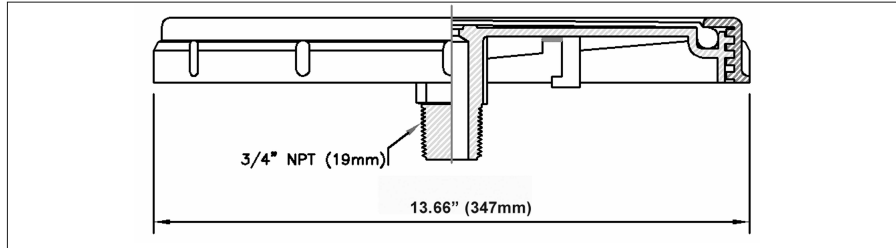
STAMFORD SCIENTIFIC  
INTERNATIONAL  
INCORPORATED

+1-845-454-8171 TEL  
+1-845-454-8094 FAX

4 TUCKER DRIVE  
POUGHKEEPSIE, NEW YORK 12603 USA  
**www.StamfordScientific.com**  
EMAIL: INFO@STAMFORDSCIENTIFIC.COM

# SSI™ FINE BUBBLE DIFFUSERS *continued*

## AFD350 12" DISC



DESIGN FLOW	FLOW RANGE	ACTIVE SURFACE AREA	SLIT QUANTITY	WEIGHT
2.5-5.0 SCFM (4.2-8.3 Sm <sup>3</sup> /hr)	0-12 SCFM (0-20 Sm <sup>3</sup> /hr)	0.70 ft <sup>2</sup> (0.0650 m <sup>2</sup> )	10,155	3.0 lbs (1.4 Kg)



STAMFORD SCIENTIFIC  
INTERNATIONAL  
INCORPORATED

+1-845-454-8171 TEL  
+1-845-454-8094 FAX

4 TUCKER DRIVE  
POUGHKEEPSIE, NEW YORK 12603 USA  
[www.StamfordScientific.com](http://www.StamfordScientific.com)  
EMAIL: [INFO@STAMFORDSCIENTIFIC.COM](mailto:INFO@STAMFORDSCIENTIFIC.COM)